

PRODUCTION

DIRECTOR: TIMO AKER
SCENIC DESIGNER: ALEX MEYER
LIGHTING DESIGNER: SARAH AKER
COSTUME DESIGNER:
SOUND DESIGNER:
TECHNICAL DIRECTOR: MICHAEL BURKE

NOTES: REVISIONS INCLUDE SHIFTING PLATFORM AND PORTAL DS, CHANGE IN LINESSET SCHEDULE, RE-DIMENSIONING HEADERS.

REVISION: 1.17.20

PRIDE AND PREJUDICE

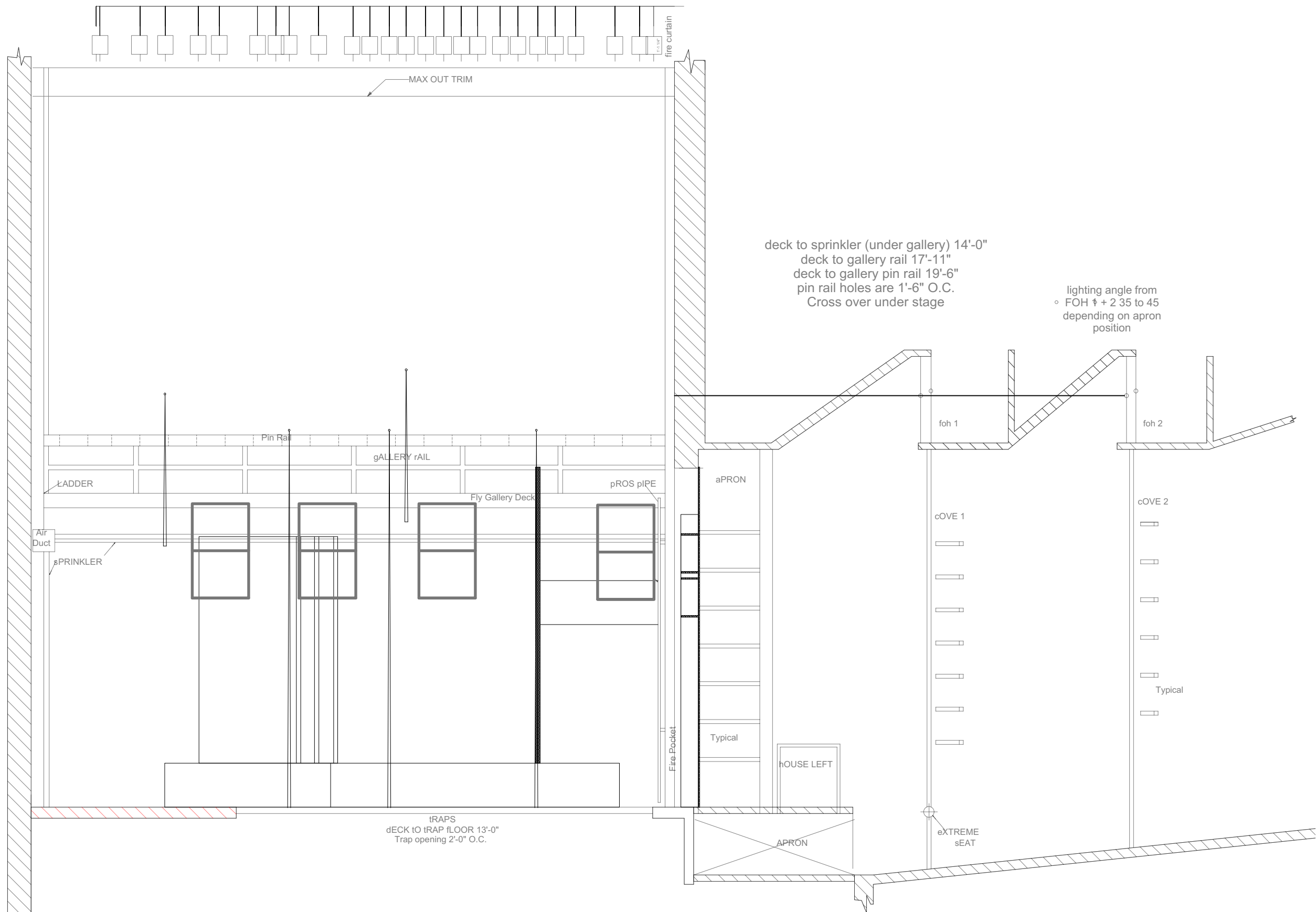
VENUE: STEPHENS COLLEGE, MACLEANKANBURG PLAYHOUSE

SCENIC: PLAN

DATE: 1.7.20

SCALE: 1/4" = 1'0"

PLATE: **1**
OF: 9



PRODUCTION

DIRECTOR: TIMO AKER
 SCENIC DESIGNER: ALEX MEYER
 LIGHTING DESIGNER: SARAH AKER
 COSTUME DESIGNER:
 SOUND DESIGNER:
 TECHNICAL DIRECTOR: MICHAEL BURKE

NOTES:

REVISION: 1.17.20

PRIDE AND PREJUDICE

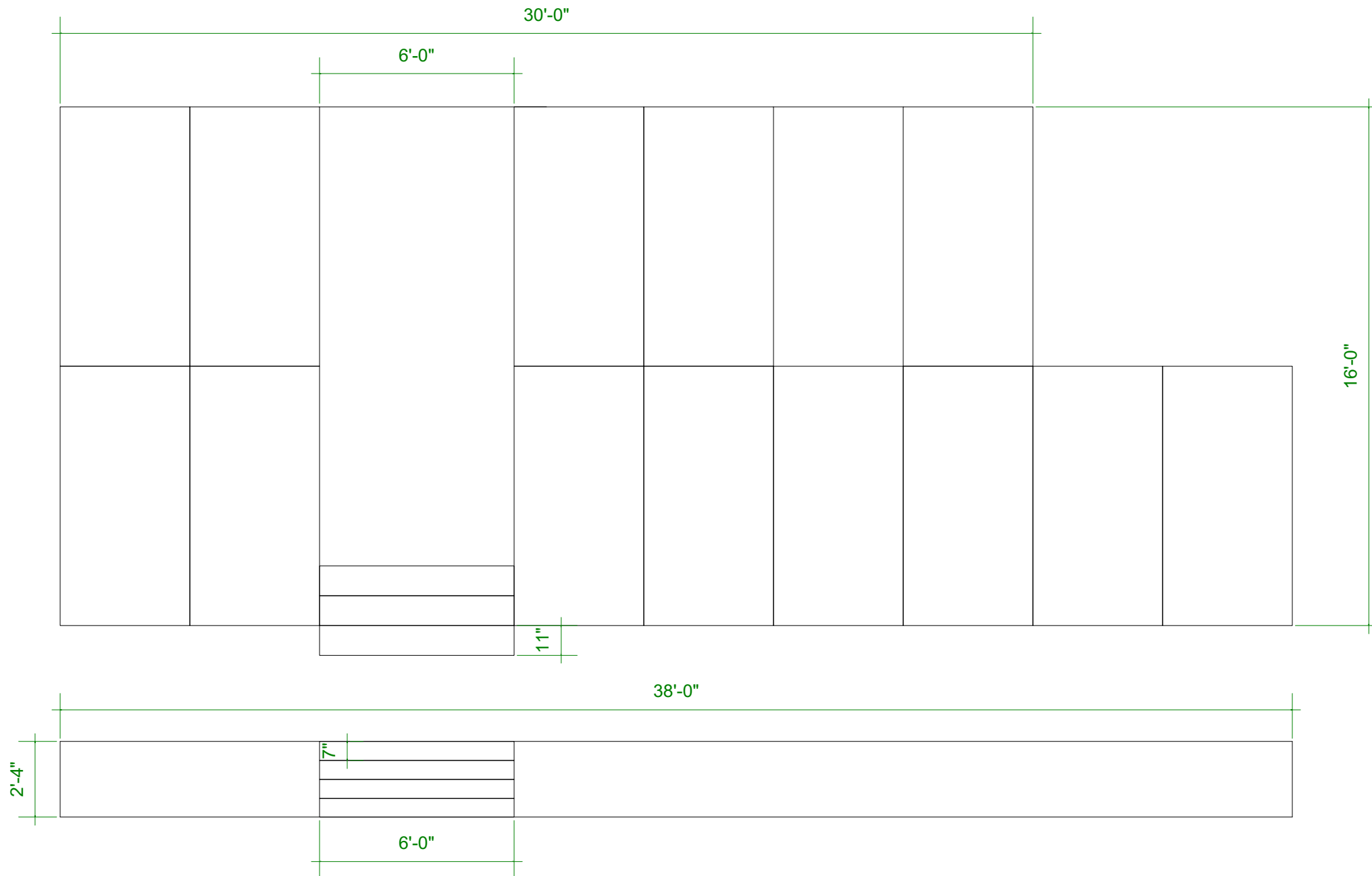
VENUE: STEPHENS COLLEGE,
 MACLEANSBURG PLAYHOUSE

SCENIC: SL SECTION

DATE: 1.7.20

SCALE: 3/16" = 1'0"

PLATE: **2**
 OF: 9



1 **PLATFORM AND STAIR**
Scale: 1/4" = 1'-0"

PRODUCTION

DIRECTOR: TIMO AKER
SCENIC DESIGNER: ALEX MEYER
LIGHTING DESIGNER: SARAH AKER
COSTUME DESIGNER:
SOUND DESIGNER:
TECHNICAL DIRECTOR: MICHAEL BURKE

NOTES: UTILIZE STOCK PLATFORMING. LID WITH
HARDBOARD.

REVISION:

PRIDE AND PREJUDICE

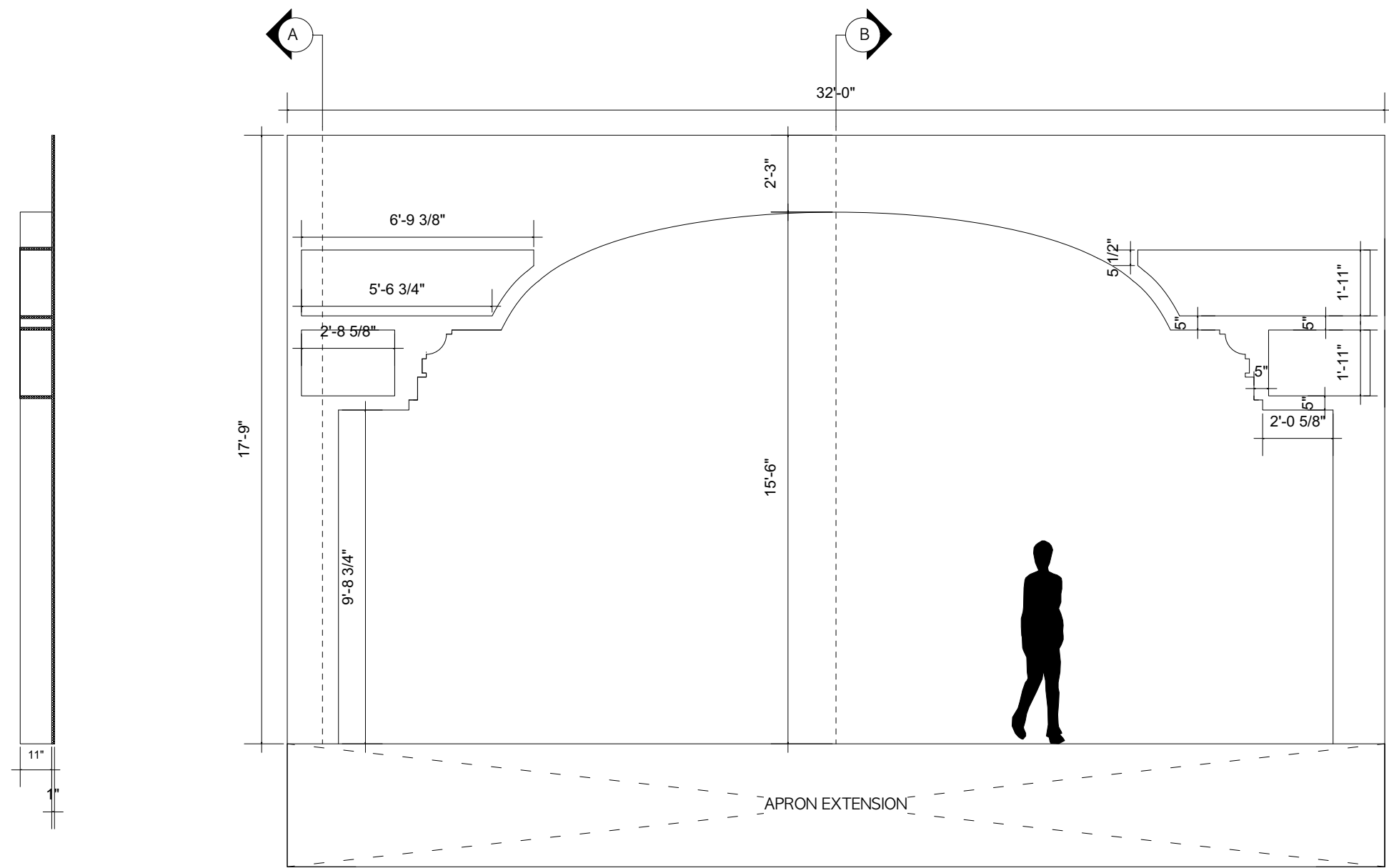
VENUE: STEPHENS COLLEGE,
MACLEANBURG PLAYHOUSE

SCENIC: PLATFORM AND STAIR

DATE: 1.7.20

SCALE: AS NOTED

PLATE: **3**
OF: 9



3 SECTION A
Scale: 1/4" = 1'-0"

1 FALSE PROSCENIUM - FRONT
Scale: 1/4" = 1'-0"

2 SECTION B
Scale: 1/4" = 1'-0"

PRODUCTION
DIRECTOR: TIMO AKER
SCENIC DESIGNER: ALEX MEYER
LIGHTING DESIGNER: SARAH AKER
COSTUME DESIGNER:
SOUND DESIGNER:
TECHNICAL DIRECTOR: MICHAEL BURKE

NOTES: BUILT FROM FLATS ON FACE. 1" REVEAL ON ARCHWAY AND SHELVES. HUNG IMMEDIATELY FORWARD OF PROSCENIUM LINE. SHELVES MUST SUPPORT FOAM HOUSE UNITS. LENGTHEN LEGS TO HOUSE FLOOR IF APRON IS CUT.

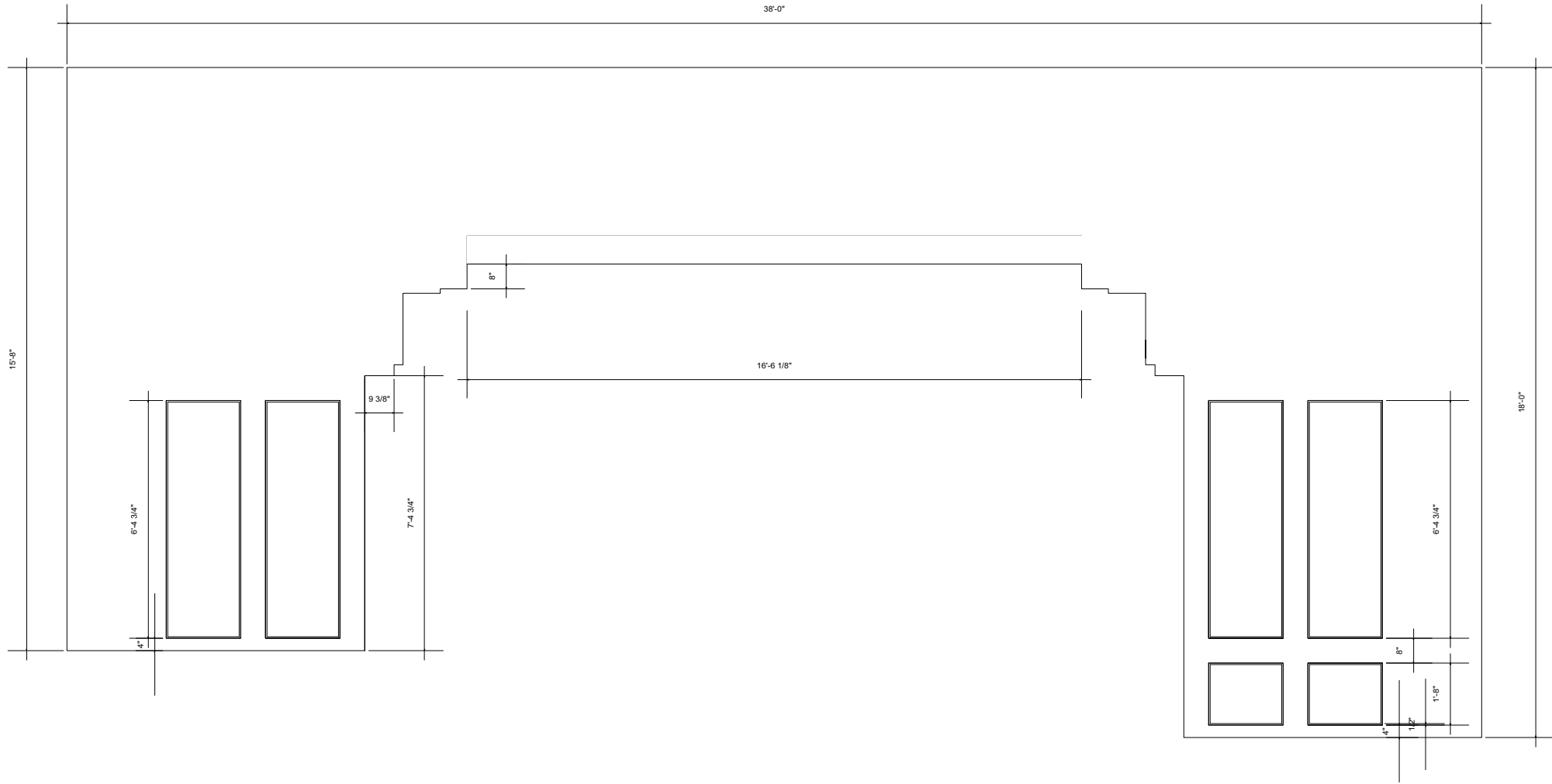
REVISION:

PRIDE AND PREJUDICE
VENUE: STEPHENS COLLEGE, MACLEANKBURG PLAYHOUSE
SCENIC: FALSE PROSCENIUM

DATE: 1.7.20

SCALE: AS NOTED

PLATE: **4**
OF: 9



2 PORTAL SIDE
Scale: 1/4" = 1'-0"

1 PORTAL FRONT
Scale: 1/4" = 1'-0"

PRODUCTION

DIRECTOR: TIMO AKER

SCENIC DESIGNER: ALEX MEYER

LIGHTING DESIGNER: SARAH AKER

COSTUME DESIGNER:

SOUND DESIGNER:

TECHNICAL DIRECTOR: MICHAEL BURKE

NOTES: BUILD FROM FLATS ON FACE. HANG FROM BATTEN.

REVISION:

PRIDE AND PREJUDICE

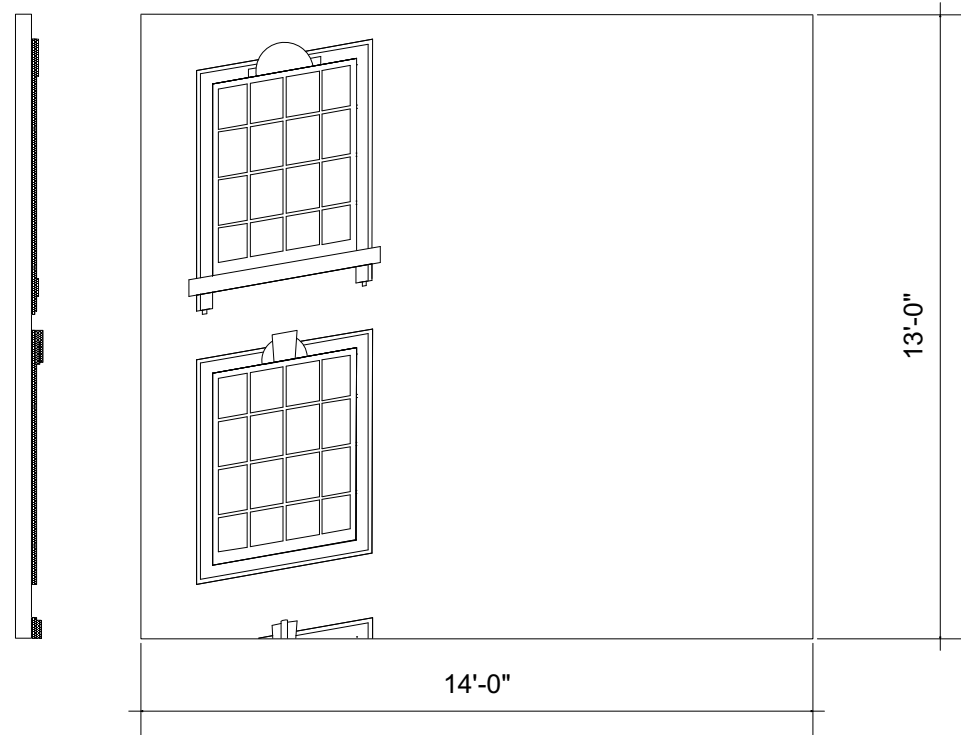
VENUE: STEPHENS COLLEGE,
MACLEANSBURG PLAYHOUSE

SCENIC: PORTAL

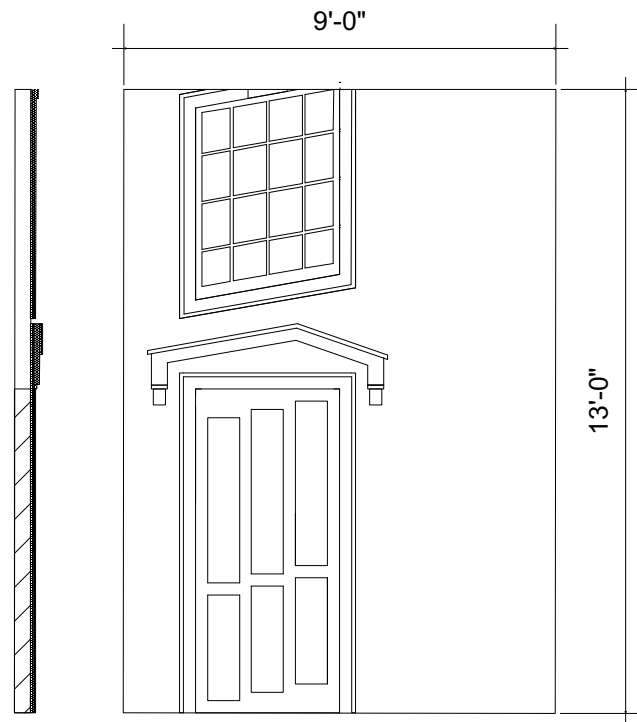
DATE: 1.7.20

SCALE: AS NOTED

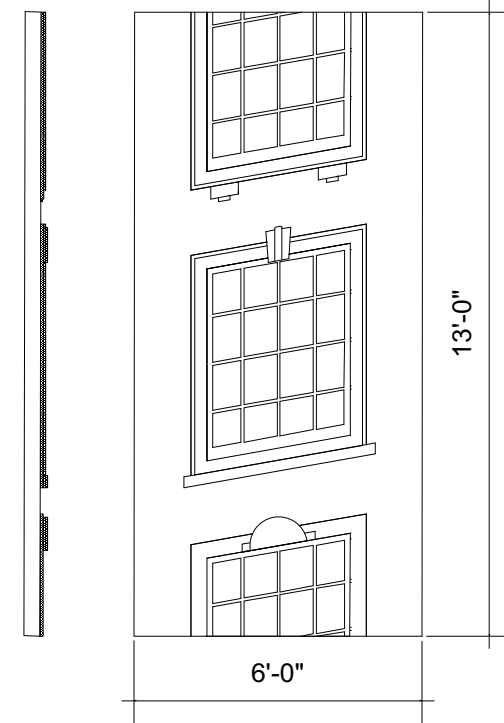
PLATE: **5**
OF: 9



1 WALL A
Scale: 1/4" = 1'-0"



2 WALL B
Scale: 1/4" = 1'-0"



3 WALL C
Scale: 1/4" = 1'-0"

PRODUCTION

DIRECTOR: TIMO AKER

SCENIC DESIGNER: ALEX MEYER

LIGHTING DESIGNER: SARAH AKER

COSTUME DESIGNER:

SOUND DESIGNER:

TECHNICAL DIRECTOR: MICHAEL BURKE

NOTES: WINDOWS CUT OUT AND MUSLIN COVERED ALONG BACK. DOOR FUNCTIONAL.

REVISION:

PRIDE AND PREJUDICE

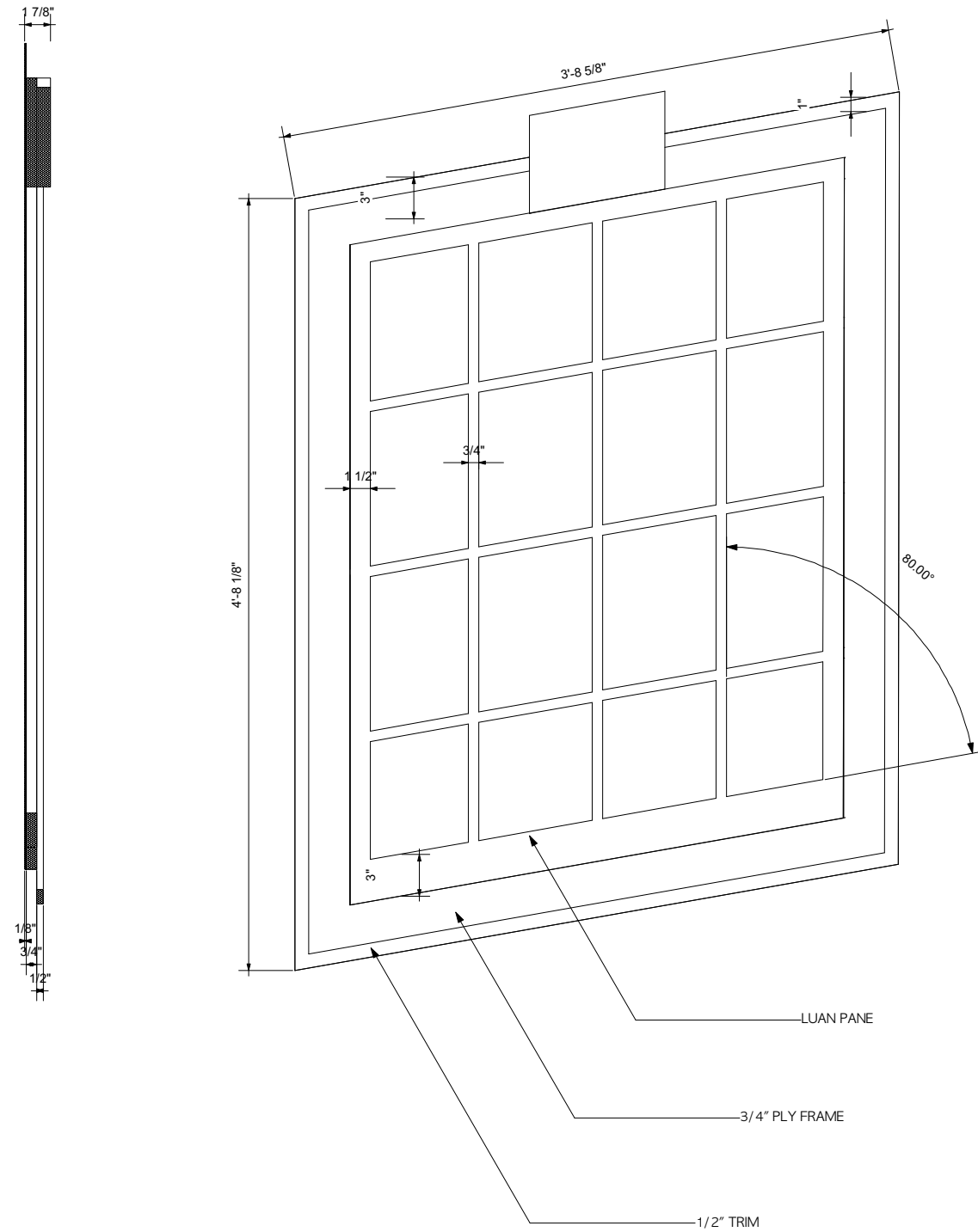
VENUE: STEPHENS COLLEGE,
MACLEANSBURG PLAYHOUSE

SCENIC: WALL A-C

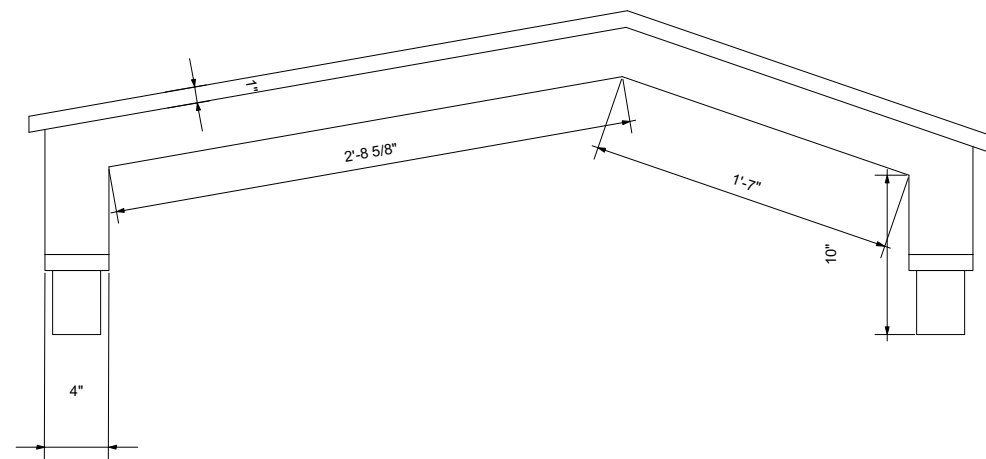
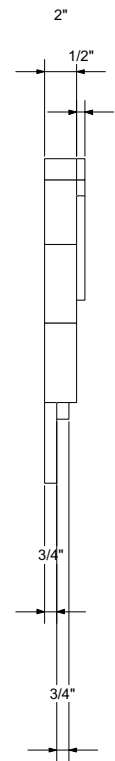
DATE: 1.7.20

SCALE: AS NOTED

PLATE: **6**
OF: 9



1 WINDOW DETAIL - TYPICAL
Scale: 1" = 1'-0"



2 PEDIMENT DETAIL
Scale: 1" = 1'-0"

PRODUCTION

DIRECTOR: TIMO AKER
SCENIC DESIGNER: ALEX MEYER
LIGHTING DESIGNER: SARAH AKER
COSTUME DESIGNER:
SOUND DESIGNER:
TECHNICAL DIRECTOR: MICHAEL BURKE

NOTES: KEystone AND LEDGE DIFFERENT FOR EACH WINDOW. REFERENCE WALLS A - C. LUAN AND PLY FRAME IS CONSISTENT.

REVISION:

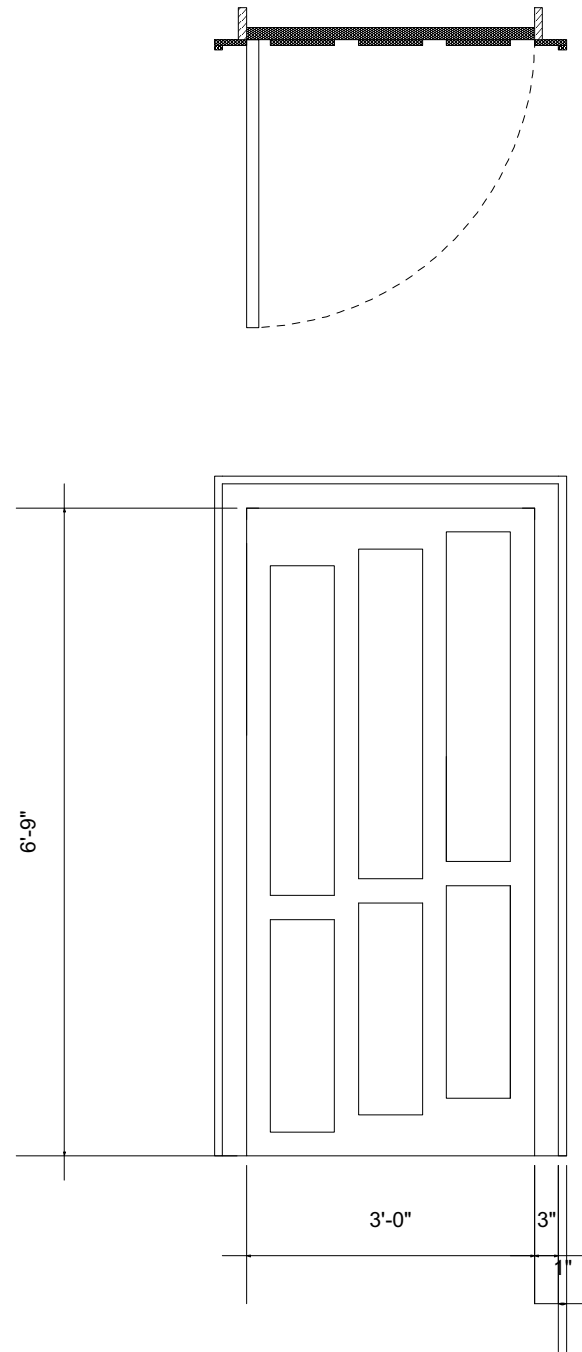
PRIDE AND PREJUDICE

VENUE: STEPHENS COLLEGE, MACLEANKBURG PLAYHOUSE
SCENIC: WINDOW/PEDIMENT

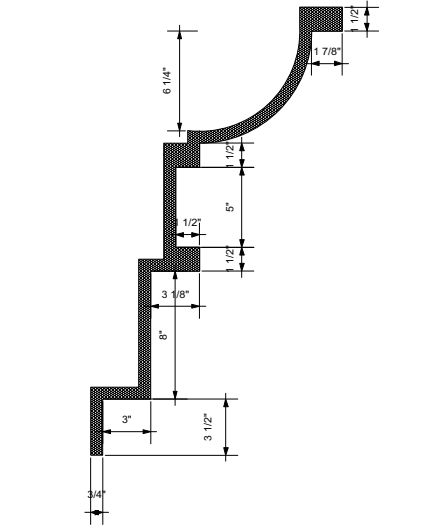
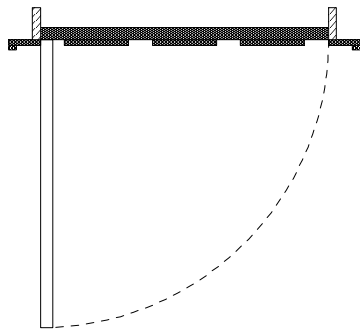
DATE: 1.7.20

SCALE: AS NOTED

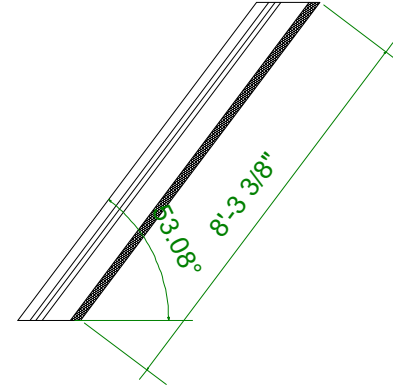
PLATE: **7**
OF: 9



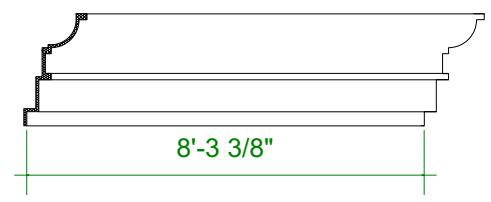
1 DOOR DETAIL
Scale: 1/2" = 1'-0"



2 HEADER DETAIL
Scale: 1" = 1'-0"



3 HEADER TOP
Scale: 1/4" = 1'-0"



4 HEADER FRONT
Scale: 1/4" = 1'-0"

PRODUCTION

DIRECTOR: TIMO AKER
SCENIC DESIGNER: ALEX MEYER
LIGHTING DESIGNER: SARAH AKER
COSTUME DESIGNER:
SOUND DESIGNER:
TECHNICAL DIRECTOR: MICHAEL BURKE

NOTES: HEADER TO BE BUILT OUT OF 3/4" MATERIAL. RAM BOARD OR SONOTUBE, ETC. FOR CURVE. ENDS ABUT TO BACK OF FALSE PROSCENIUM AND FRONT OF PORTAL.

REVISION: 1.17.20

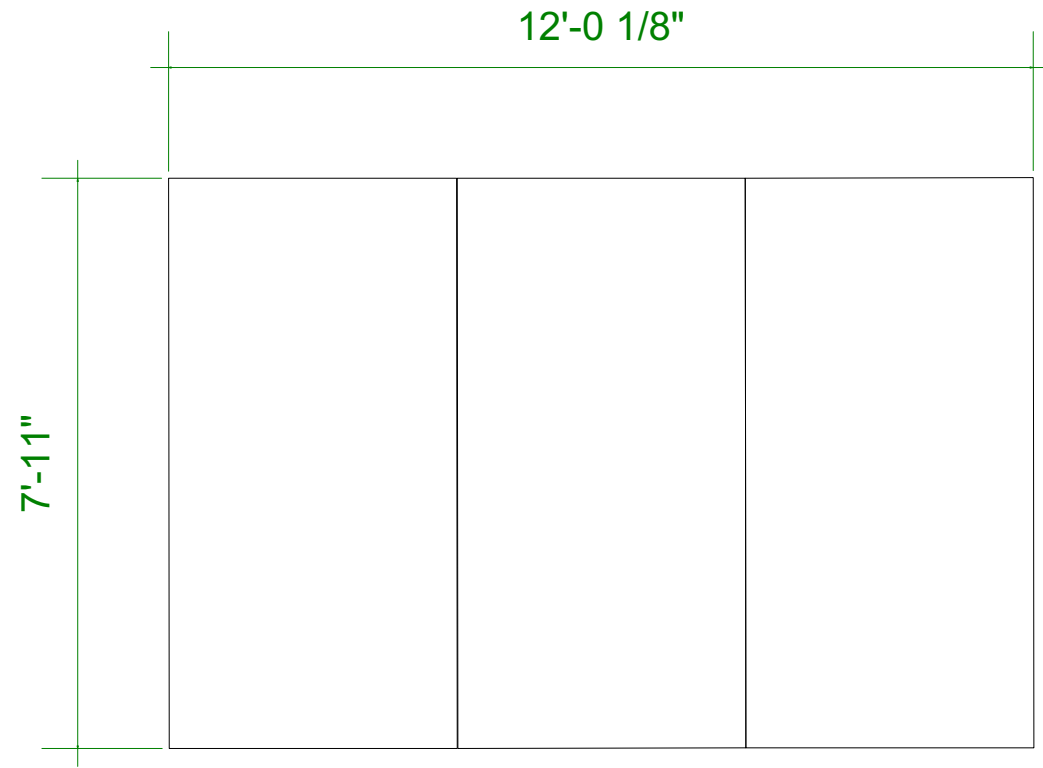
PRIDE AND PREJUDICE

VENUE: STEPHENS COLLEGE, MACLEANSBURG PLAYHOUSE
SCENIC: DOOR/HEADER

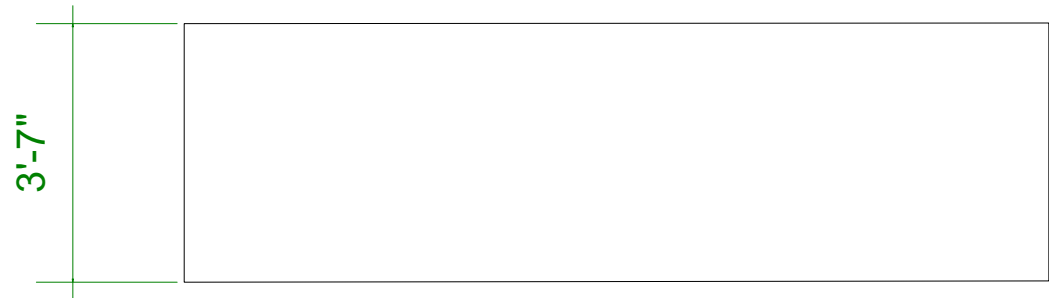
DATE: 1.7.20

SCALE: AS NOTED

PLATE: 8
OF: 9



1 APRON TOP
Scale: 3/8" = 1'-0"



2 APRON FRONT
Scale: 3/8" = 1'-0"

PRODUCTION

DIRECTOR: TIMO AKER

SCENIC DESIGNER: ALEX MEYER

LIGHTING DESIGNER: SARAH AKER

COSTUME DESIGNER:

SOUND DESIGNER:

TECHNICAL DIRECTOR: MICHAEL BURKE

NOTES: BUILD AROUND PIT LIFT. FLUSH WITH STAGE. LID WITH HARDBOARD.

REVISION:

PRIDE AND PREJUDICE

VENUE: STEPHENS COLLEGE,
MACLEANBURG PLAYHOUSE

SCENIC: APRON

DATE: 1.7.20

SCALE: AS NOTED

PLATE:

9

OF: 9